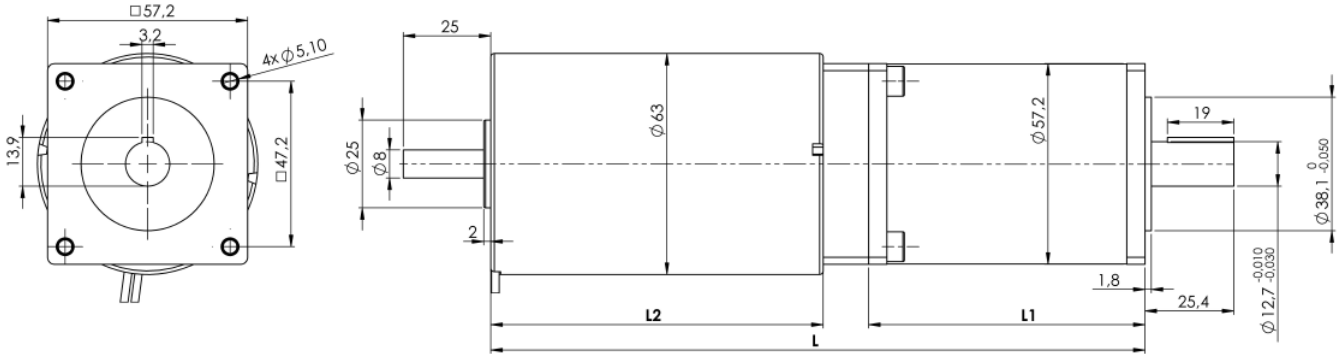


| Motor Dunker GR63x25 |               |     |    |    |
|----------------------|---------------|-----|----|----|
| RATIO                | ETAPAS/STAGES | L   | L1 | L2 |
| 10                   | 1             | 162 | 54 | 95 |
| 25                   | 2             | 174 | 66 | 95 |
| 50                   | 2             | 174 | 66 | 95 |
| 100                  | 2             | 174 | 66 | 95 |
| 125                  | 3             | 187 | 79 | 95 |
| 250                  | 3             | 187 | 79 | 95 |
| 500                  | 3             | 187 | 79 | 95 |
| 1000                 | 3             | 187 | 79 | 95 |

| Motor Dunker GR63x55 |               |     |    |     |
|----------------------|---------------|-----|----|-----|
| RATIO                | ETAPAS/STAGES | L   | L1 | L2  |
| 10                   | 1             | 192 | 54 | 125 |
| 25                   | 2             | 204 | 66 | 125 |
| 50                   | 2             | 204 | 66 | 125 |
| 100                  | 2             | 204 | 66 | 125 |
| 125                  | 3             | 217 | 79 | 125 |
| 250                  | 3             | 217 | 79 | 125 |
| 500                  | 3             | 217 | 79 | 125 |
| 1000                 | 3             | 217 | 79 | 125 |



## TECHNICAL CHARACTERISTICS

High endurance planetary gearbox for heavy duty continuous workload in any position, at room temperature from -20 to 65°C, with **torque load up to 35 Nm, steady load.**

- **Box.** Steel box. Frontal mounting by four Ø5,1 holes.
- **Gear set.** Hardened steel gears guaranteeing an excellent lifetime.
- **Output shaft.** Ø12,7 mm. Stainless steel shaft, 25 mm usable length, with a standar keyway
- **Output shaft load:**
  - Axial direction, pull or push 490N.
  - Radial direction, at 5 mm from box 560N.


### MOTOR COUPLING:

- **Direct C:** GR63x25 type 12 or 24 V

### OPTIONAL:

- Speed regulation with electronic controller
- Brake

Your special requests are welcome.

|  |                     |                          | MOTORES DE C.C. - DC MOTORS<br>DUNKER GR63x55 |                                       |                            |                                       |                                       |                            |
|---|---------------------|--------------------------|---|---------------------------------------|----------------------------|---------------------------------------|---------------------------------------|----------------------------|
|   |                     |                          | GR63x25 12V                                   |                                       |                            | GR63x25 24V                           |                                       |                            |
| Reducción<br>Ratio<br>$i = X:1$   | Nº Etapas<br>Stages | Eficiencia<br>Efficiency | No load<br>speed<br>$V_0$<br>(r.p.m.)         | Nominal<br>Speed<br>$V_n$<br>(r.p.m.) | Nominal<br>Torque<br>(N.m) | No load<br>speed<br>$V_0$<br>(r.p.m.) | Nominal<br>Speed<br>$V_n$<br>(r.p.m.) | Nominal<br>Torque<br>(N.m) |
| 10  | 1                   | 0,85                     | 360,00  | 310,00                                | 1,16                       | 360,00                                | 330,00                                | 1,19                       |
| 25  | 2                   | 0,72                     | 144,00  | 124,00                                | 2,47                       | 144,00                                | 132,00                                | 2,53                       |
| 50  | 2                   | 0,72                     | 72,00   | 62,00                                 | 4,95                       | 72,00                                 | 66,00                                 | 5,06                       |
| 125   | 3                   | 0,61                     | 28,80   | 24,80                                 | 10,52                      | 28,80                                 | 26,40                                 | 10,75                      |
| 250   | 3                   | 0,61                     | 14,40   | 12,40                                 | 21,03                      | 14,40                                 | 13,20                                 | 21,49                      |

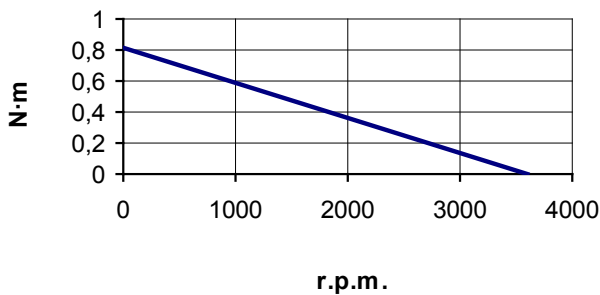
NO LOAD SPEED / RATED TORQUE

Motor GR63x25 -12V = 3600 rpm / 0,137 Nm

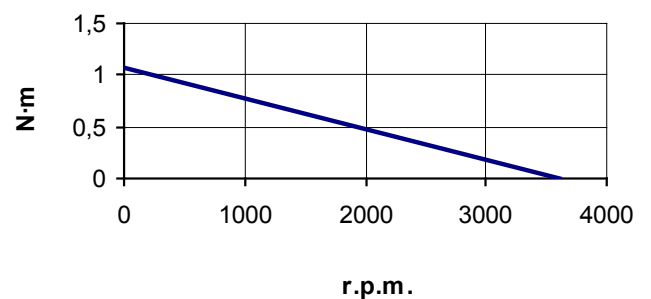
Motor GR63x55 -24V = 3600 rpm / 0,140 Nm

## CURVES

GR63x25 12V



GR63x25 24V



### GEARBOX TIPS:

**Noise:** noise level depends on load symmetry, location (avoid acoustic resonance), and rotation speed; the lower the speed on the input shaft (motor), the lower the noise.